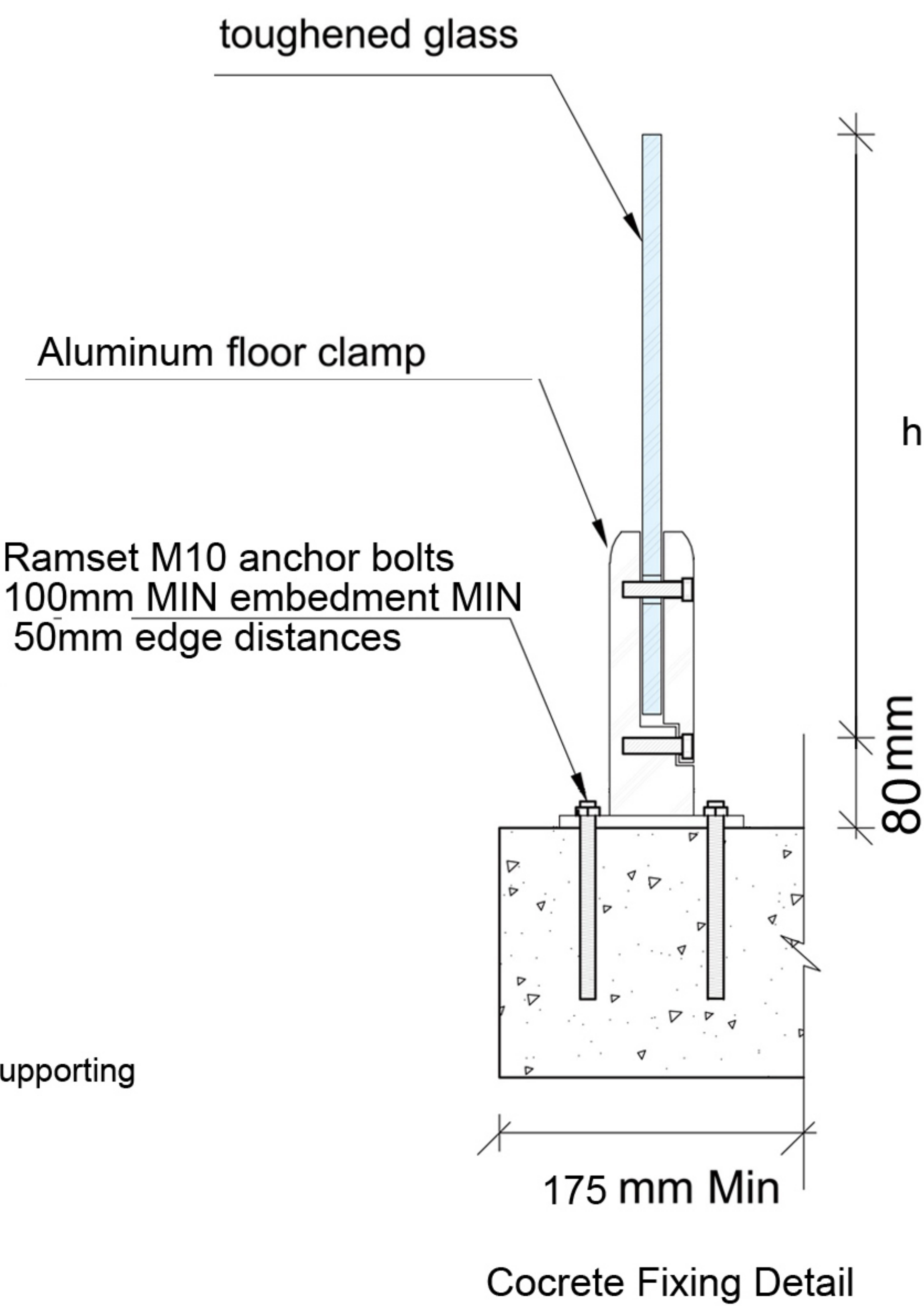
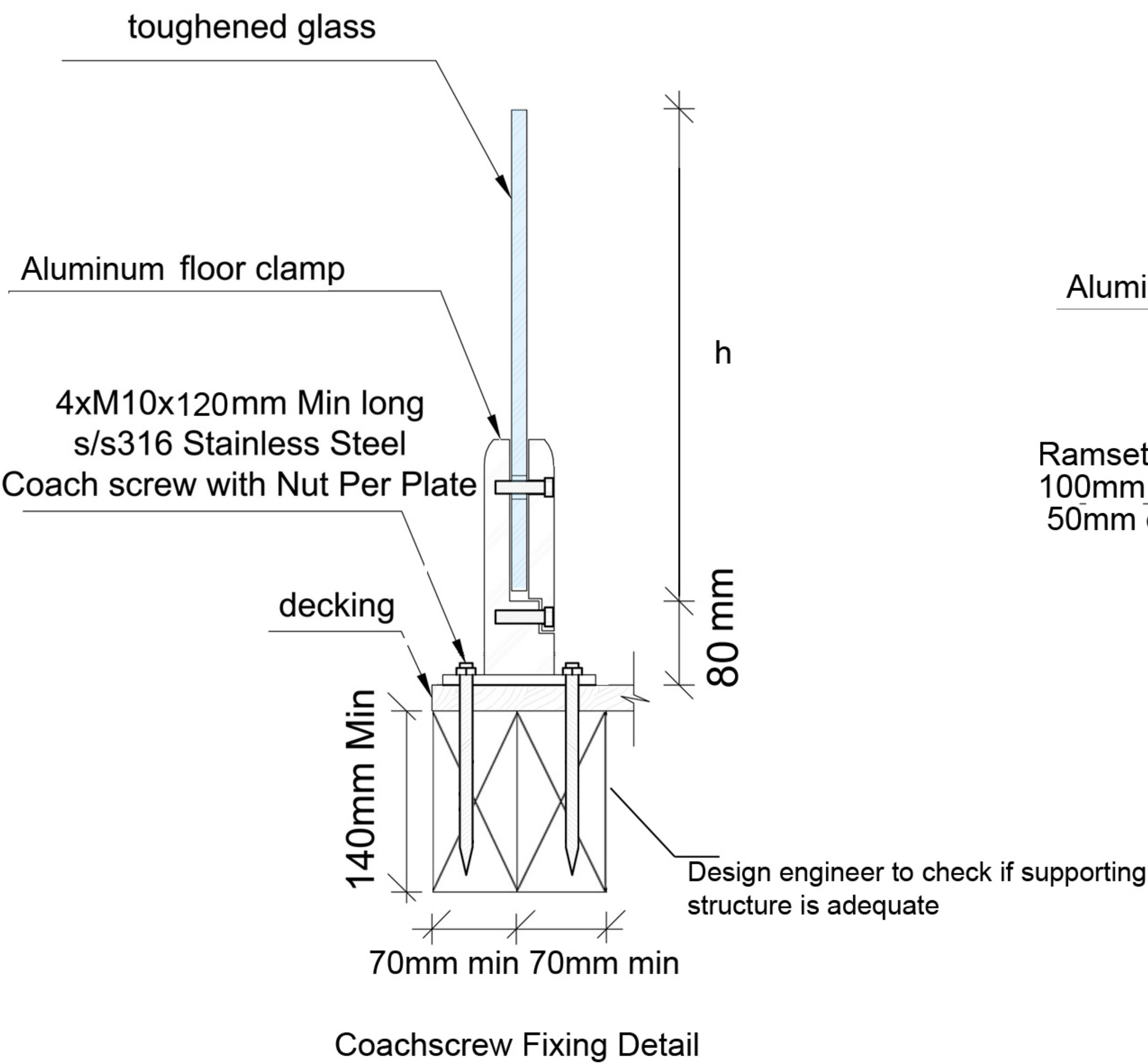
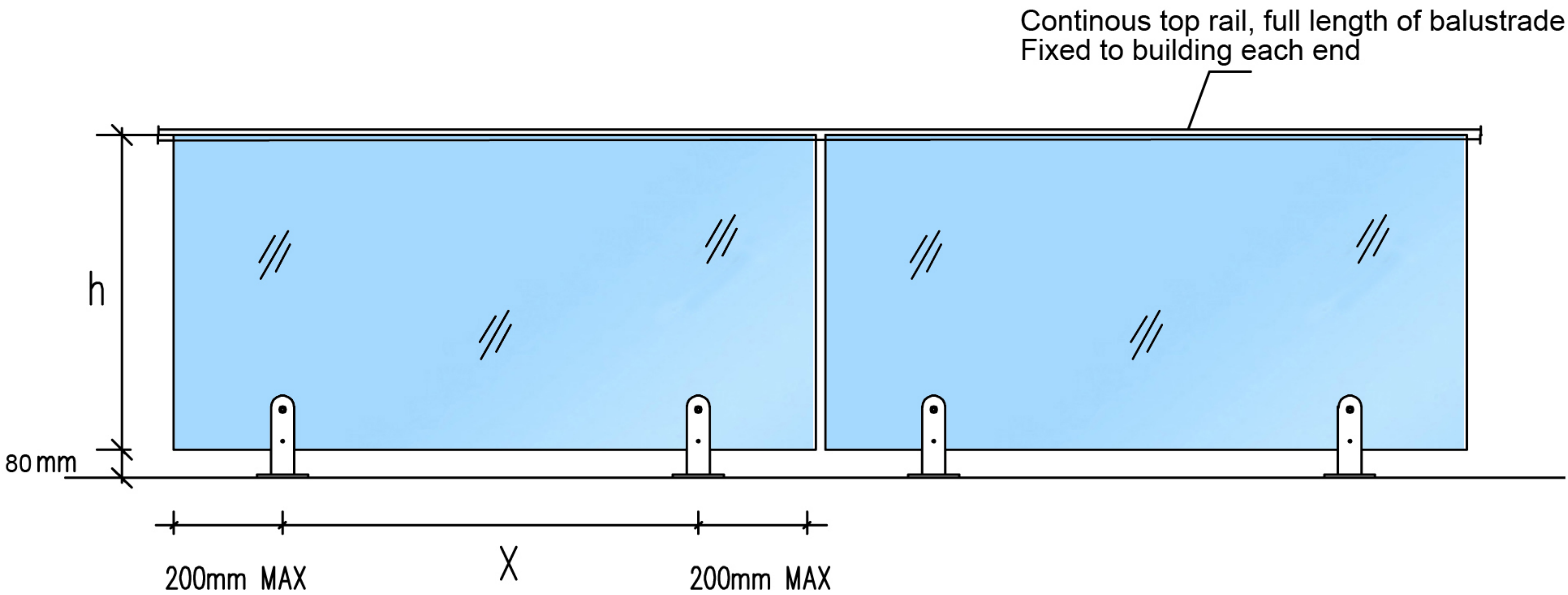
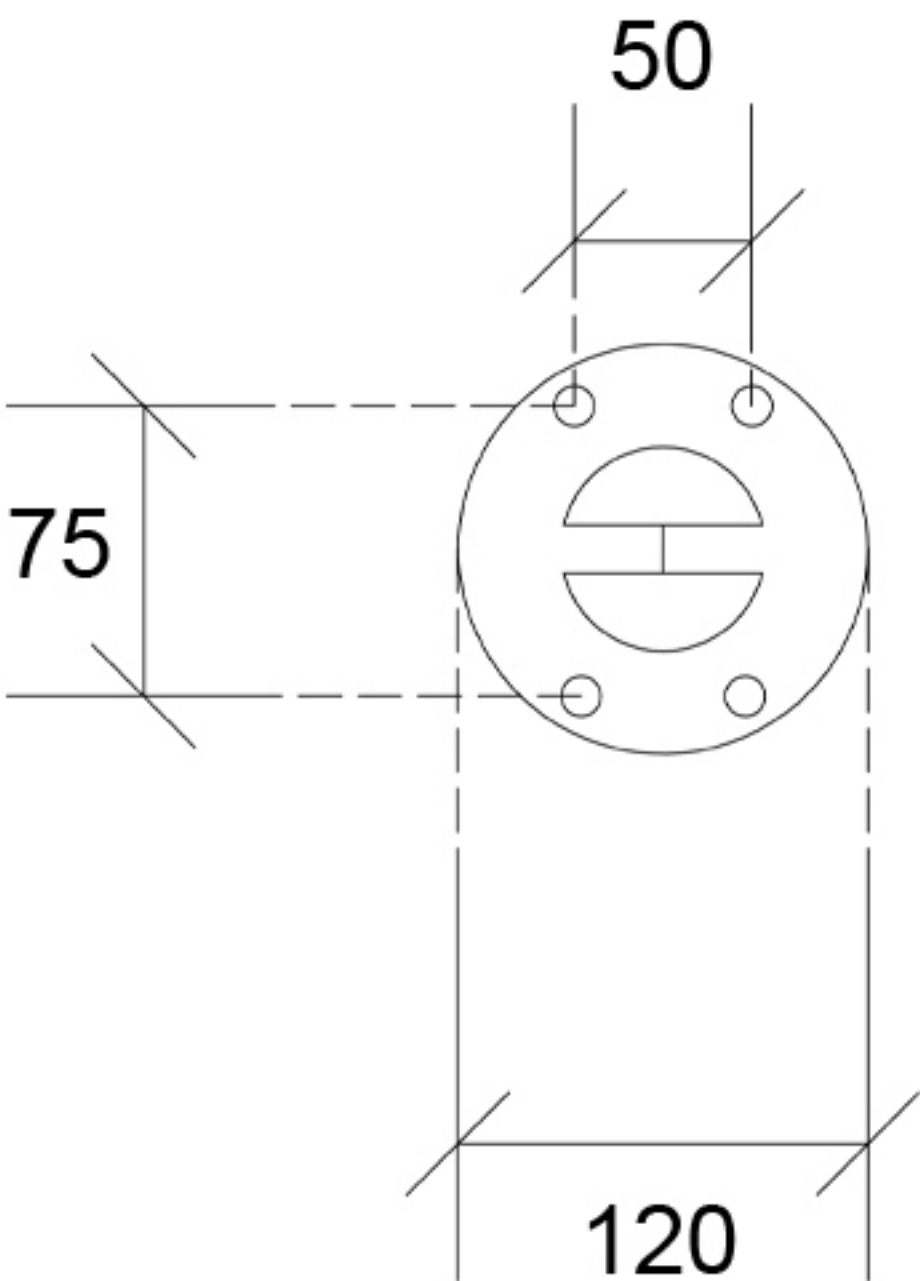


Sharpeye Glass Balustrade Dimension Schedule - Aluminum Floor Clamp System



Typical Fixing Bottomplate Plan  
Not to scale



Not to scale

- Note:
- 1. Decking floor should be be less than 25mm overhang past boundary joist to fit our standard size spacers.
  - 2. An independent structural engineer is required to check if supporting structure is code compliant.
  - 3. Dimensions h,x, and glass thickness - refer to attached schedule.



# Sharpeye Glass Balustrade Dimension Schedule - Aluminum Floor Clamp System

|      |                      |
|------|----------------------|
| NA = | Does not comply      |
| H =  | High wind zone       |
| VH = | Very High wind zone  |
| EH = | Extra High wind zone |

## External Use

| Balustrade System      |                     |               |           |            | Wind Zone compatibilities( MAX wind zone for each system) |                       |                      |                         |
|------------------------|---------------------|---------------|-----------|------------|---|-----------------------|----------------------|-------------------------|
| External use           | Glass thickness(mm) | Height h (mm) | MAX x(mm) | MIN y (mm) | Coach screw fixing  | Bolt to timber fixing | Bolt to steel fixing | Concrete Chemset fixing |
| Aluminum Floor Clamp 2 | 12                  | 1050          | 800       | NA         | VH  | VH                    | VH                   | VH                      |

## Internal Use

| Balustrade System      |                     |               |           |            | Fixing type         |                       |                      |                         |
|------------------------|---------------------|---------------|-----------|------------|---------------------|-----------------------|----------------------|-------------------------|
| Internal use           | Glass thickness(mm) | Height h (mm) | MAX x(mm) | MIN y (mm) | Coach screw fixing  | Bolt to timber fixing | Bolt to steel fixing | Concrete Chemset fixing |
| Aluminum Floor Clamp 1 | 12                  | 1200          | 800       | NA         | All fixing types OK |                       |                      |                         |

## Pool Fence

| Balustrade System      |                     |               |           |            | Fixing type        |                       |                      |                         |
|------------------------|---------------------|---------------|-----------|------------|--------------------|-----------------------|----------------------|-------------------------|
| Pool Fence             | Glass thickness(mm) | Height h (mm) | MAX x(mm) | MIN y (mm) | Coach screw fixing | Bolt to timber fixing | Bolt to steel fixing | Concrete Chemset fixing |
| Aluminum Floor Clamp 1 | 12                  | 1200          | 800       | NA         | H                  | H                     | H                    | H                       |

\*Any balustrade systems outside of this table require specific engineering design.